

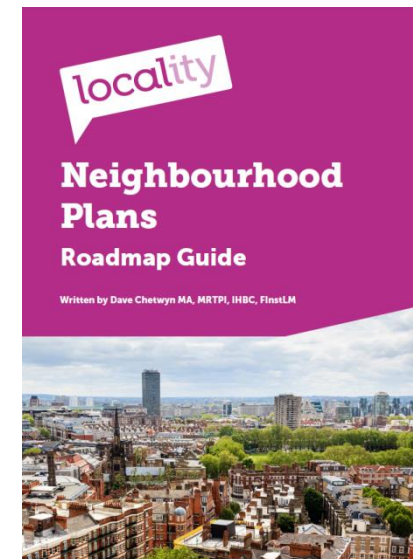
# Neighbourhood Planning in South Cambridgeshire



South  
Cambridgeshire  
District Council

## What is a neighbourhood plan?

- A community-led initiative giving local communities power to prepare a planning document.
- It will be used in deciding planning applications for a local area.
- It cannot promote **less** development than the Local Plan.
- It must be in general conformity with the strategic policies in the Local Plan.



**Make a plan**  
**MAKE A DIFFERENCE**

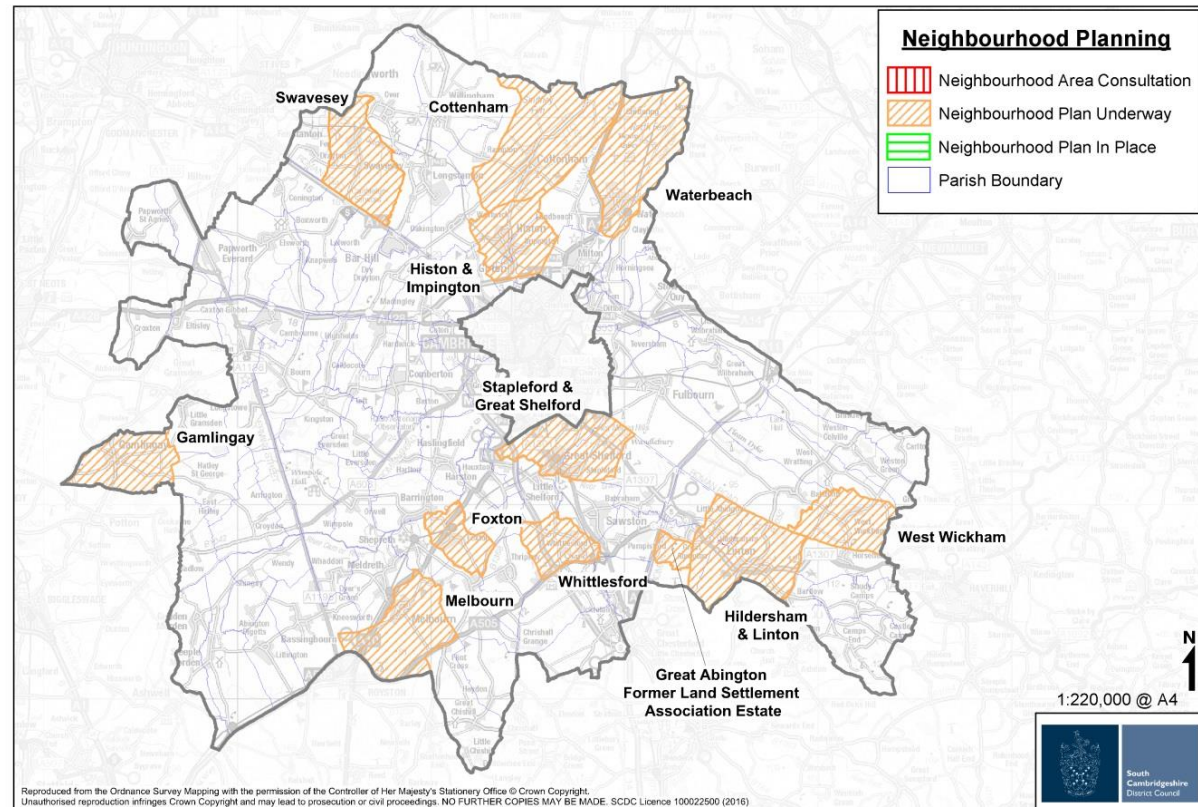
# Who is doing a plan?



South  
Cambridgeshire  
District Council

We have 13 designated neighbourhood areas:

- Linton and Hildersham (designated jointly) 5/14
- Histon and Impington (part of the parish excluded) 9/14
- Gamlingay 2/15
- Waterbeach 8/15
- Foxton 11/15
- West Wickham 11/15
- Cottenham 11/15
- Melbourn 5/16
- Whittlesford 8/16
- Great Abington Former LSA Estate 9/16
- Stapleford and Great Shelford (designated jointly) 11/16
- Swavesey 11/16
- Thriplow 8/17



# Plan progress



South  
Cambridgeshire  
District Council

## Parish

- Most plans still being prepared and some have been for 3 years
- Some villages still considering issues and options and gathering evidence
- Only one plan – for Gt Abington LSA is at the formal pre-submission consultation stage

## SCDC

- Parish briefings and meetings
- Ongoing provision of advice and support to village NP groups
- Briefing workshops
- Member reports 2014, 2016 and 2017
- Task and Finish Group set up 2016 to review how we can best support and advise NP groups
- Project Officer post added to Planning Policy Team to provide an extra resource

# Key issues



South  
Cambridgeshire  
District Council

- Planning solutions for local issues – adding value
- Is a Neighbourhood Plan the right solution?
- Parish and District capacity
- Simple plans not mini Local Plans





# Whittlesford



South  
Cambridgeshire  
District Council

- Created 4 work areas – housing, transport, economy, heritage & environment
- Produced and consulted on vision and key objectives
- Carried out housing needs assessment
- Now bringing 4 into one very early draft Plan



# Next steps



South  
Cambridgeshire  
District Council

- Consult with landowners
- Sense check our policies and draft plan using a professional consultant
- Specialist assessments done via district council
- Circulate and get parish views then submit to South Cambs
- Referendum
- Plan made mid 2018

